

Huatraco® C25 Modular System

(Crab® 25 Modular System)



Huatraco® C25 Modular System is manufactured and complied with British Standard BS1139 : Part 5 and BS EN 12810 -1&2. This system is approved by the Department of Occupational Safety and Health, Malaysia.

Efficiencies :

- Quick installation and dismantling
- Multilevelled and Multi-directional
- Interchangeable and Flexible
- Mistake Free
- Durable

Huatraco® C25 Modular System (Crab® 25 Modular System)

Introduction

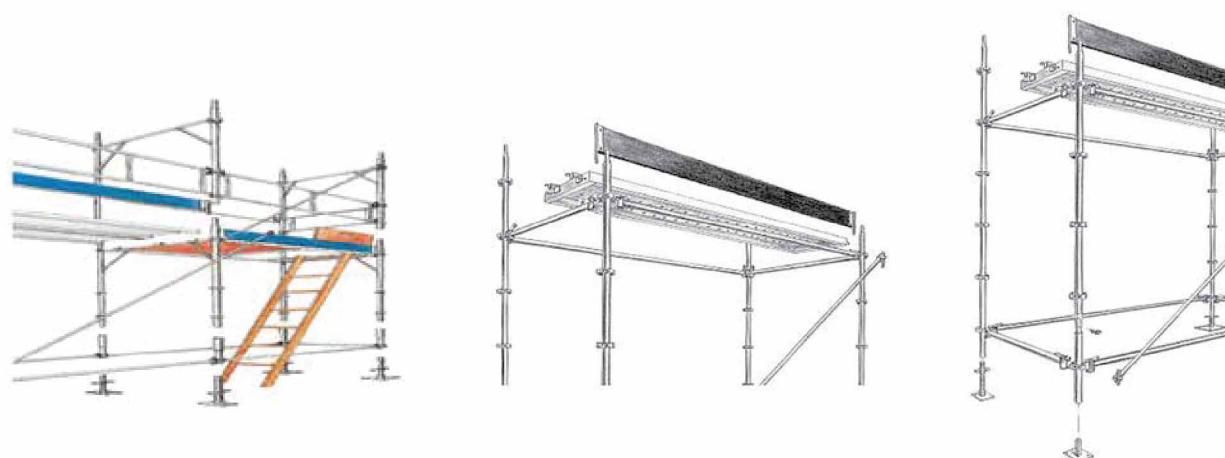
Crab® Multi-Directional System

Connection at 20 Directions and more.....



Crab® Multi- Levelled System

Joint at every 500mm vertically



Certifications



JABATAN KESELAMATAN DAN KESIHATAN PEKERJAAN
MALAYSIA
(KEMENTERIAN SUMBER MANUSIA)
ARAS 2, 3 & 4, BLOK D3, PARCEL D,
PUSAT PENTADBIRAN KERAJAAN PERSEKUTUAN
62502 W.P. PUTRAJAYA.

Tel : 03 - 88865000
Fax : 03 - 88892339
E-mail :
Web :

Ruj. Tuan : -
Ruj. Kami : JKPP IS 127/ 453 /9 (3)
Tarikh : 8 Mei 2002

Pengarah,
H.T. Scaffolding Manufacturing Sdn. Bhd.
Lot 6096, Jln Hj. Abd. Manan
Batu 51/2, Jln Meru
41050 Klang, Selangor

(u/p : George Teh)

Per : Kebenaran Penggunaan (Scaffolding) Crab 25 Modular System Scaffold.

Tuan,

Adalah saya diarah untuk merujuk kepada permohonan tuan berhubung dengan perkara yang tersebut di atas.

2. Sukacita dimaklumkan bahawa setelah disemak butir-butir yang dikemukakan, Jabatan ini tidak ada apa-apa halangan bagi pihak tuan untuk menggunakan "Crab 25 Modular System Scaffold" mengikut rekabentuk dan spesifikasi yang terdapat di dalam permohonan.
3. Ingin diingatkan bahawa setiap pemasangan, penyelenggaraan dan kerja-kerja merombak perancah hendaklah dilakukan oleh pengendali perancah yang berdaftar dengan Jabatan.

Sekian, terima kasih.

'BERKHIDMAT UNTUK NEGARA'

Saya yang menurut perintah,

(Ir. ROSLI HUSSIN)
b.p. Ketua Pengarah
Jabatan Keselamatan dan Kesihatan Pekerjaan,
Malaysia.

Noria/Crab 25A/mei02

(Sila nyatakan rujukan fail apabila menjawab surat ini)

Huatraco® C25 Modular System (Crab® 25 Modular System)

Projects - Construction



Cable Stayed Bridge,
Putrajaya, Malaysia



Projects - Construction



Shopping Mall, Putrajaya, Malaysia



Huatraco® C25 Modular System (Crab® 25 Modular System)

Projects - Construction

Shopping Mall,
Putrajaya, Malaysia



Huatraco® C25 Modular System (Crab® 25 Modular System)

Projects - Construction



▲ Tunnel Construction



▲ Monorail Kuala Lumpur, Malaysia

KL Sentral, Malaysia.
(Scaffold over LRT track)



Huatraco® C25 Modular System (Crab® 25 Modular System)

Projects - Construction



▲ Office Building, Putrajaya, Malaysia



▲ Mosque, Putrajaya, Malaysia



▲ Power Plant, Sri Manjung, Malaysia



▲ Elevated Water Tank

Huatraco® C25 Modular System (Crab® 25 Modular System)

Projects - Construction



▲ Stair Access Tower



▶ Mobile Tower

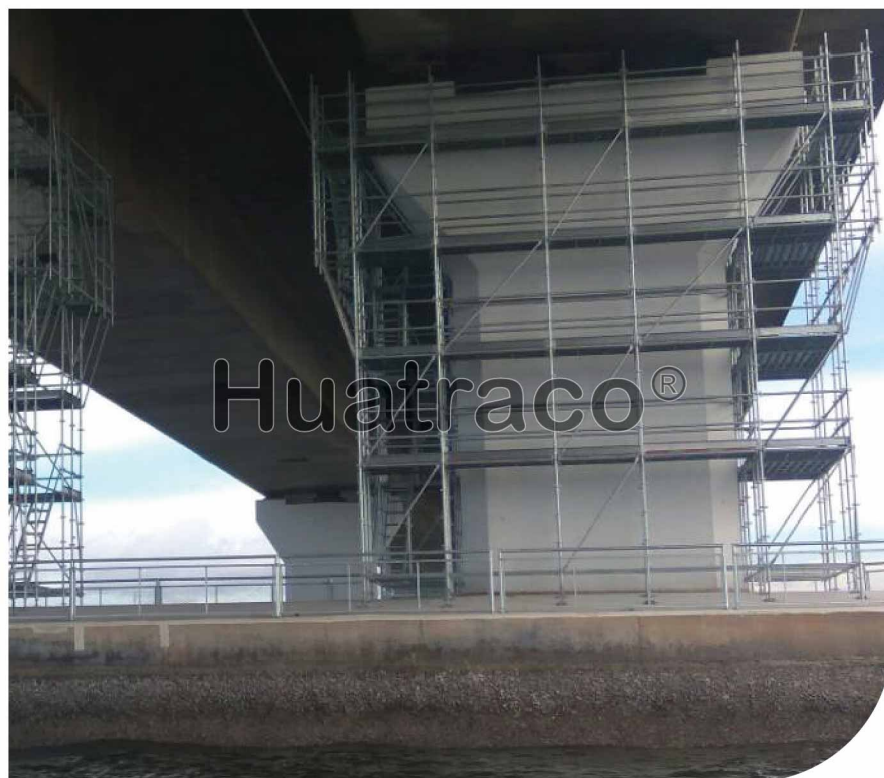
▲ Shopping Complex

Huatraco® C25 Modular System (Crab® 25 Modular System)

Projects - Maintenance



▲ Malaysia-Singapore Second Crossing Bridge, Johor



▲ Malaysia-Singapore Second Crossing Bridge, Johor

Projects - Maintenance



Pylon Access Tower,
Penang Bridge, Malaysia



Huatraco® C25 Modular System (Crab® 25 Modular System)

Projects - Industrial Works

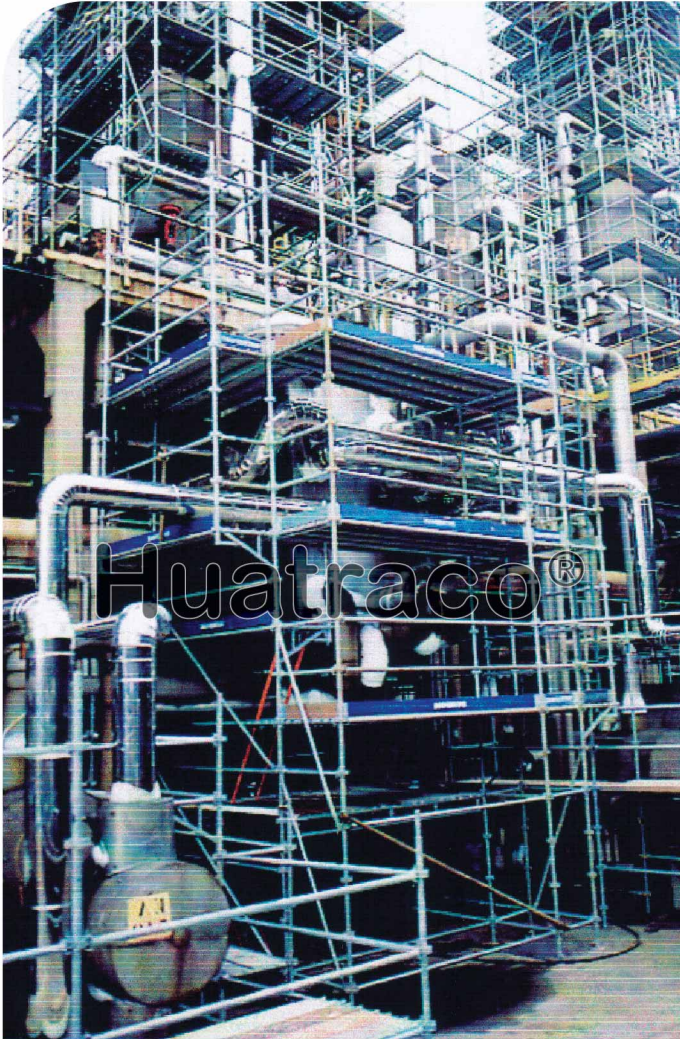


Oil & Gas Offshore Platform



Huatraco® C25 Modular System (Crab® 25 Modular System)

Projects - Industrial Works



Oil & Gas Industries

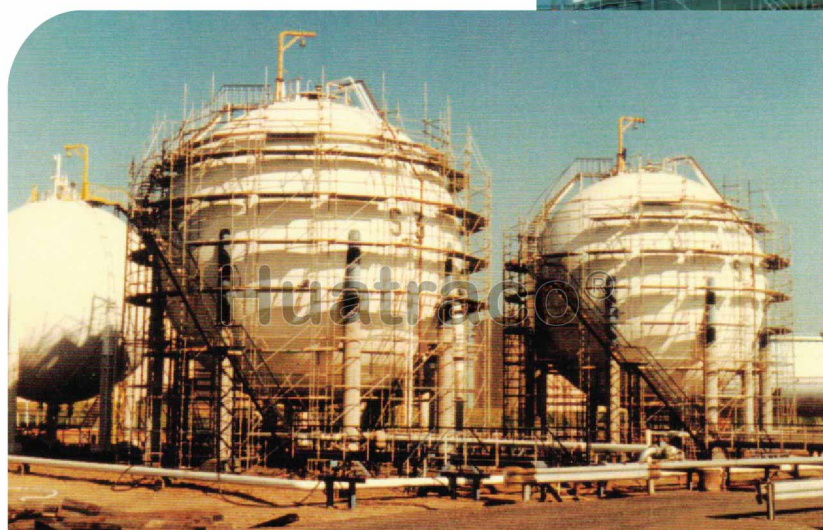


Huatraco® C25 Modular System (Crab® 25 Modular System)

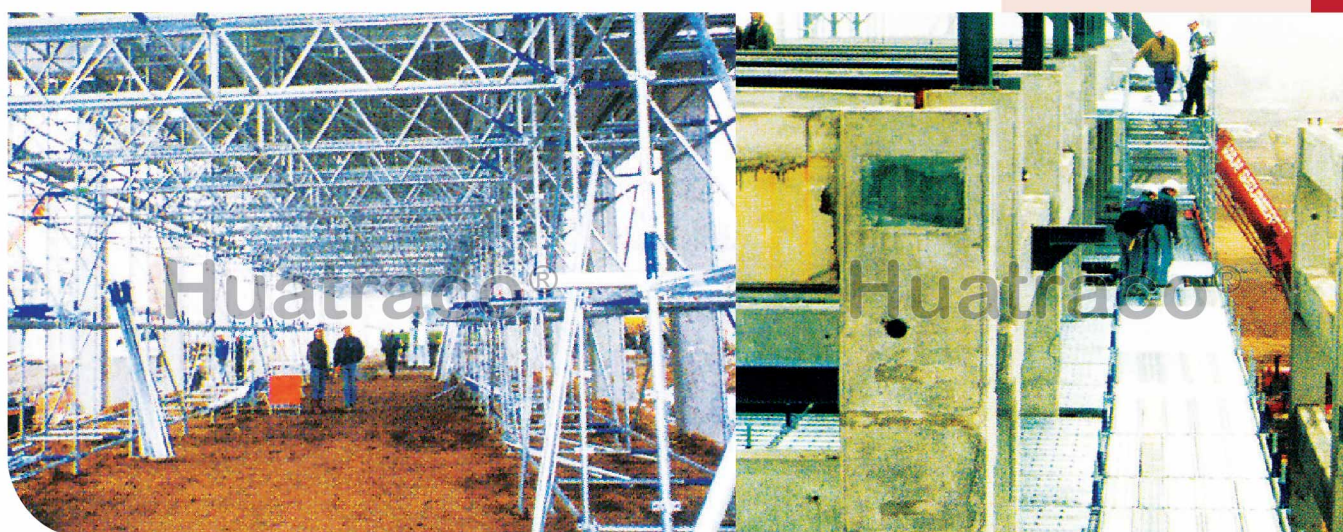
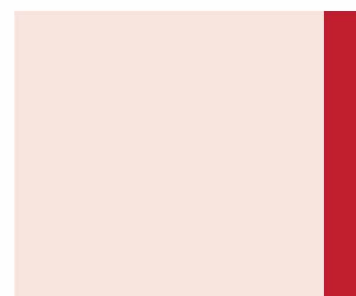
Projects - Industrial Works



▲ Ammonia Tank



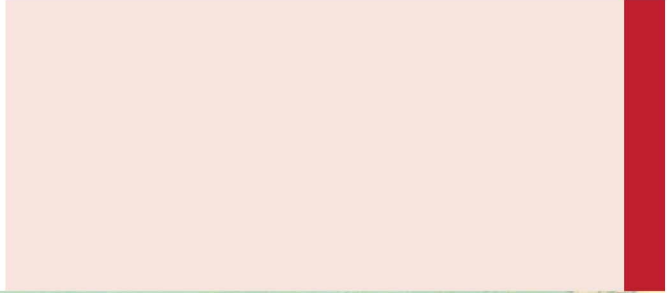
▲ Petro-chemical



▲ Oil & Gas Industries

Huatraco® C25 Modular System (Crab® 25 Modular System)

Projects - Industrial Works



► Shipyard



▲ Air Craft

Huatraco® C25 Modular System (Crab® 25 Modular System)

Projects - Events



▲ Wall Climbing



▲ Self-standing Tower

▼ 30 Meter Span Structure at F1 Sepang International Circuit, Malaysia



▲ The Mines Resort, Malaysia



Huatraco® C25 Modular System (Crab® 25 Modular System)

Components

Crab® Standard C25



It consists of a tube $\varnothing 48$ with four stirrups welded at 90° at 0.50m intervals. One end forms a spigot to centre the standards and avoid any pinning together.

Standard 3.00m	12.66kg
Standard 2.00m	8.77kg
Standard 1.00m	4.52kg
Basic Standard	2.53kg

$\varnothing 48.3\text{mm} \times 2.7\text{mm thk}$

Standard Packing



Total quantity per bundle: 100 pcs
Quantity in horizontal: 10 pcs
Quantity in vertical: 10 pcs

Crab® Ledger



It is made of tube $\varnothing 48$ and is provided at both ends with a wedge-clamp.

$\varnothing 48.3\text{mm} \times 2.7\text{mm thk}$

0.35m
0.50m
0.70m
1.00m
1.50m
1.80m
2.00m
2.50m
3.00m

Standard Packing



Total quantity per bundle: 50 pcs
Quantity in horizontal: 12, 11, 10, 9, 8, pcs
Quantity in vertical: 5 pcs

Crab® Brace



It consists of a tube $\varnothing 38$ provided at both ends with a wedge-locking bolt. It ensures the structure vertical bracing; when doubled, it enables to get large working areas on brackets. Its size is determined by the braced bay height(H) and length(L)

H2.00xL0.70	l=2.09
H2.00xL1.00	l=2.19
H2.00xL1.50	l=2.45
H2.00xL1.80	l=2.63
H2.00xL2.00	l=2.76
H2.00xL2.50	l=3.13
H2.00xL3.00	l=3.53

(l) = locking bolt distance between axis
 $\varnothing 38\text{mm} \times 2.7\text{mm thk}$

Standard Packing



Total quantity per bundle: 50 pcs

Crab® Jack Base C25 / 500



It enables to compensate the ground unevenness.

Weight = 3.19kg
 $\varnothing 38\text{mm} \times 4\text{mm thk}$
Plate thickness 6.0mm

Standard Packing



Total quantity per pallet: 200 pcs

Huatraco® C25 Modular System (Crab® 25 Modular System)

Components

Crab® U-Head C25 / 500



It is designed to accommodate primary, secondary, etc

Weight = 4.0kg
Ø 38mm x 4mm thk

Standard Packing



Total quantity per pallet: 100 pcs

Crab® Board Bearer



It cuts the span of the boards which constitute the working or access areas.

Ø 48.3mm x 2.5mm thk

0.70m	2.66kg
1.00m	3.66kg
1.50m	5.33kg
1.80m	6.34kg
2.00m	7.00kg
2.50m	8.67kg
3.00m	10.35kg

Standard Packing



Total quantity per bundle: 50 pcs
Quantity in horizontal: 10 pcs
Quantity in vertical: 5 pcs

Crab® Toe - Board



It is 150mm high in compliance with the regulations. It is secured by mere housing into the stirrups of the standards.

0.70m	2.80kg
1.00m	3.60kg
1.50m	5.50kg
1.80m	6.50kg
2.00m	7.20kg
2.50m	9.00kg
3.00m	10.80kg

Standard Packing



Total quantity per bundle: 20 pcs

Crab® Reinforced Ledger



It enables to increase the platform working load.

2.50m	13.80kg
3.00m	16.40kg

Huatraco® C25 Modular System (Crab® 25 Modular System)

Components

Crab® Ladder Beam 4m or 5m



4.00m	39.90kg
5.00m	46.36kg

They are used for bridge passages. In the middle of the upper boom, they comprise a spigot to join positioning a standard.

Crab® Walking Board



It is a metal platform made of galvanized steel perforated sheet. Fixation by 4 U-shaped hooks with locking and anti-upheaval device.

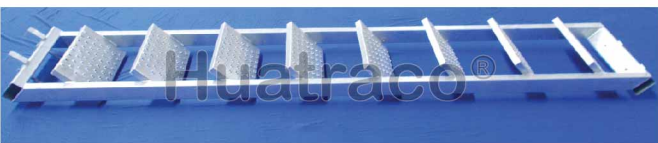
0.30 x 0.70m
0.30 x 1.00m
0.30 x 1.50m
0.30 x 1.80m
0.30 x 2.00m
0.30 x 2.50m
0.30 x 3.00m
0.20 x 0.70m
0.20 x 1.00m
0.20 x 1.50m
0.20 x 1.80m
0.20 x 2.00m
0.20 x 2.50m
0.20 x 3.00m

Standard Packing



Total quantity per bundle: 20 pcs
Quantity in horizontal: 2 pcs
Quantity in vertical: 10 pcs

Crab® Stair



Weight = 40.0kg

Standard Packing



Total quantity per bundle: 10 pcs

Crab® Stair (Aluminium)



Weight = 23.4kg

Standard Packing



Total quantity per bundle: 5 pcs

Huatraco® C25 Modular System (Crab® 25 Modular System)

Components

Crab® Small Post



Equipped with a wedge-coupler and it is used at the end of the bracket, as a guard-rail post, or onto the horizontal members in order to cut the span of storage or circulation areas.

Weight = 5.51kg
Ø 48.3mm x 2.7mm thk

Standard Packing



Total quantity per bundle: 50 pcs

Crab® Socket base C25



When used with a castor wheel, it enables to erect mobile structures.

Crab® Caster Wheel



Crab® S-Pin C25



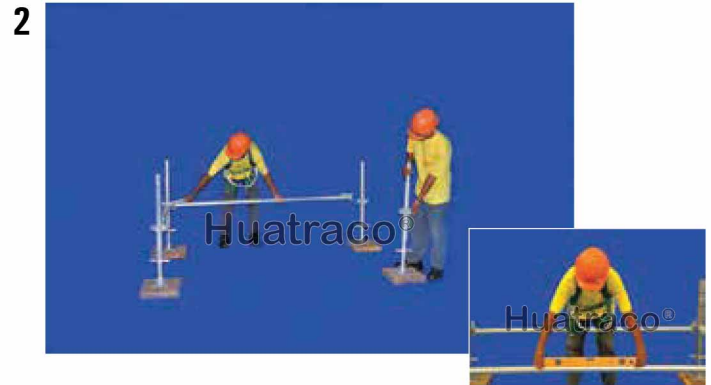
It is S-shaped and firmly secures the standards together.

Weight = 0.17kg

Erection Procedures



- Set up the jack bases and space them according to the lengths of the longitudinal and transverse horizontal members.



- Fit the basic standards or standard into the jack base.
- Fit the horizontal members. Check the structure is level.



- Fit the first working platform to ease the erection.
- Erect the complete working platform at the access bay.



- Build the first lift.
- Fit the horizontal members.



- Fit the access trapdoor platform in the access bay.
- Lower the ladder.
- Check accurately that the structure is level.



- Fit the platform in each cell of the first stage.
- Stabilise the structure longitudinally by fitting diagonal braces at the side away from the working area (inset).