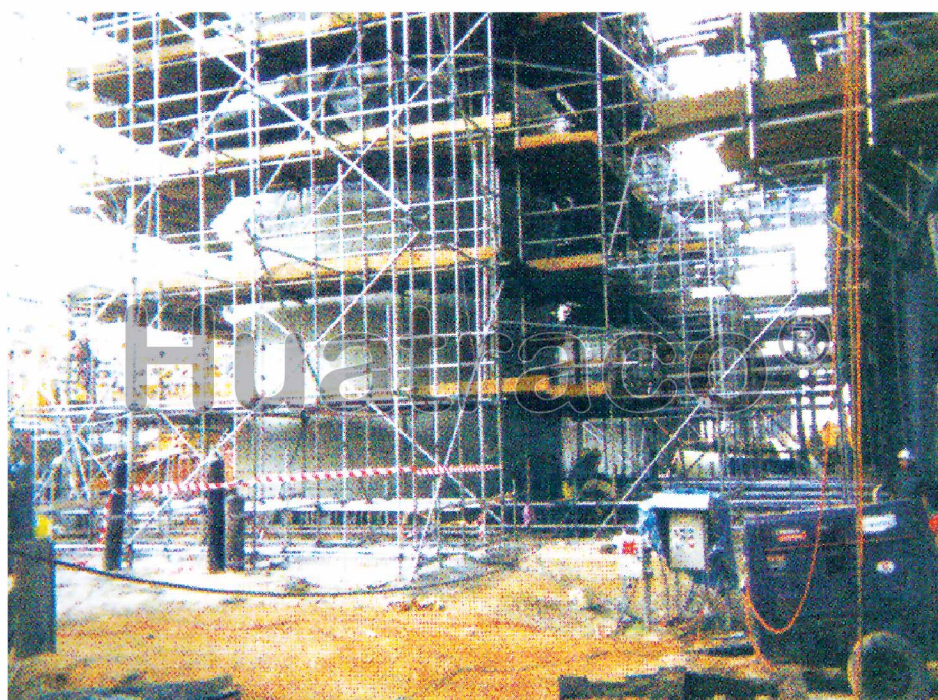
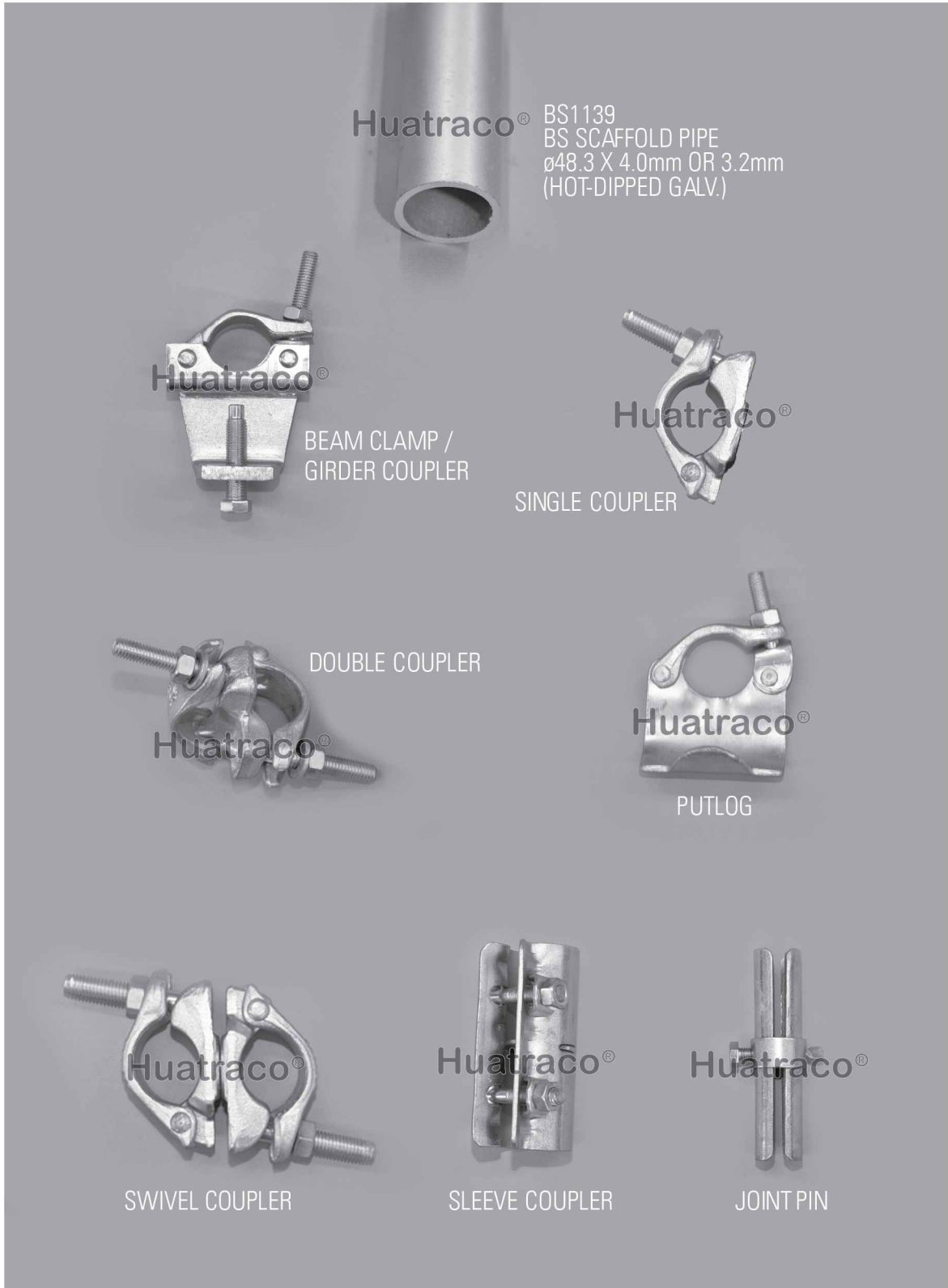


Huatraco®

Tubular Scaffolding



Components (BS 1139, BS EN 39 & BS EN 74)



Huatraco® Metal Deck

Sizes available in millimeter (mm)

Width (W)	210 mm	240 mm	250 mm	
Length (L)	1,500 mm	2,000 mm	3,000 mm	4,000 mm

